



Richard Schlinkert

Southern Regional Manager

Jupiter Systems

THE DISPLAY WALL TECHNOLOGY COMPANY

VISUALIZE, COLLABORATE, CONTROL

Who Is Jupiter Systems?

- World's premier manufacturer of Display Wall Controllers (DWC's)
- DWC's are Jupiter's ONLY Product
- Jupiter Market Share <50% Worldwide
- Supplying advanced computer/video display and control products since 1982
- More than 8,000 installations in 50+ countries, far more than any other DWC maker

Who Is Jupiter Systems?

- HQ in Hayward, California (Silicon Valley)
- All Jupiter products built in USA
- The only DWC mfr'd. under ISO 9001:2008
- Jupiter's broadcast products subsidiary, Teranex, HQ'd and manufactured in Florida
- Jupiter DWC's are compatible with all brands and displays technologies, "display agnostic"
- Longest MTBR, longest warranty (up to 5 yrs)

Key Markets and Applications

- Traffic & Transportation
 - ITS, Mass Transit, Aviation
- Government/Military (fixed & mobile)
- Emergency Operations Centers (EOC's)
- Security Operations Centers (SOC's)
- Network Operation Centers (NOC's)
- Utilities & Infrastructure
 - Power/Gas/Water, Telecom
- Health Care

Beijing Traffic Management Bureau



PG&E Grid Operations Center



Ottawa Emergency Mgmt Centre



Telefonica Moviles (Mexico)



Beijing Municipal Public Security Bureau





Jupiter's Two Product Families





Fusion®



Fusion

- Workhorse in C&C space, other 24/7 apps
- Hot-swappable components for high-demand apps
- Broadest range of sizes/configurations in industry
- Each Fusion custom-configured for each site
- Purpose-built XP Workstation w/ATI graphics card
- Dual processors, SATA/RAID 1/RAID 5 HDD's
- Mature suite of Control SW with Open API
- Working with SWRI on developing SunGuide app

Jupiter Fusion®



price



Fusion 940



Fusion 964
• Powerful mid-range



Fusion 980
• Top of the line
• Available Expansion chassis

features



PixelNet®

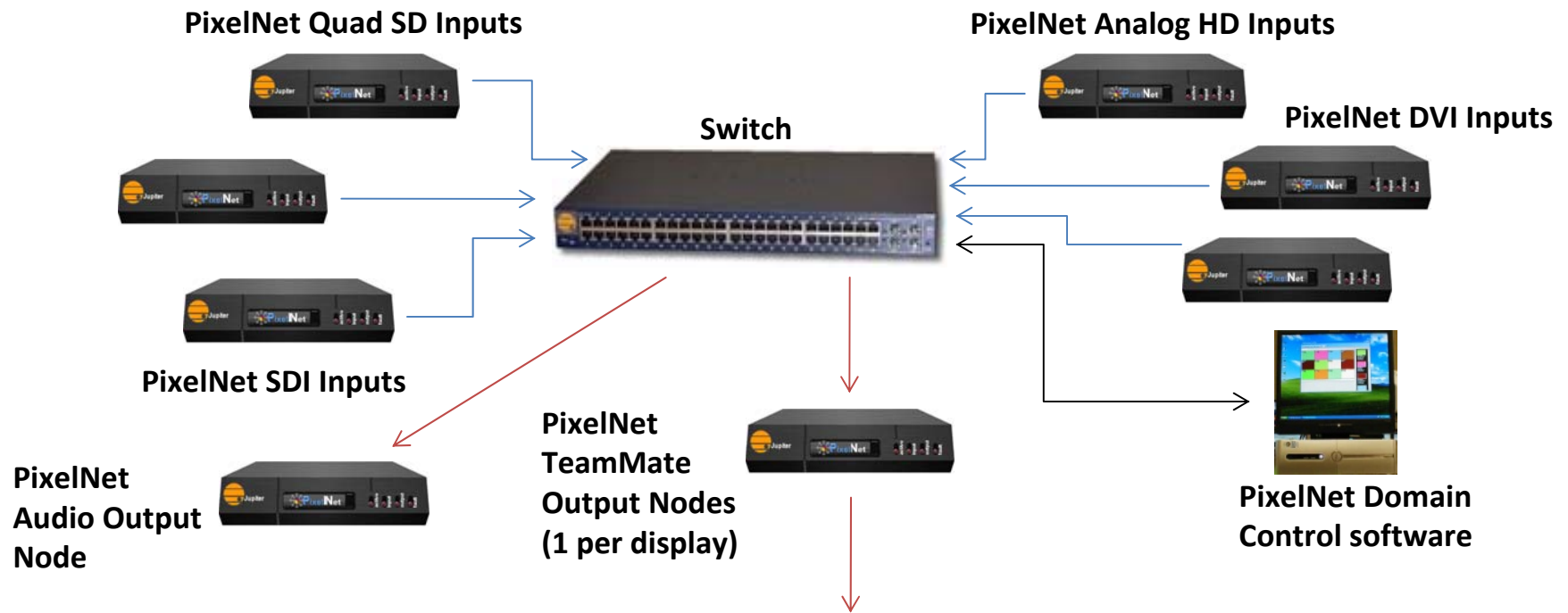
The Only All-Digital Display Wall Controller

Jupiter PixelNet®

- The first end to end, ALL Digital DWC for both digital and analog information sources
- Small input and output nodes connected via stand-alone network switches and CAT-6 cables
- Data/Video runs full band width across system (no compression, artifacts, etc)
- PixelNet routes input signals on a pixel by pixel basis to any or all output nodes
- Easily expandable system—simply add input and/or output nodes
- Uses economical SVS-8 eight channel MPEG decoder to input streams into the system



Jupiter PixelNet®



Display Wall





THANK YOU!!!

THE DISPLAY WALL TECHNOLOGY COMPANY

VISUALIZE, COLLABORATE, CONTROL